



T32

- ▶ N2 W2, 1.33 m spacing
- ▶ N2 W3, 2.66 m spacing
- ▶ ASI B

EN 1317

CE



Steel backed timber guardrail T32

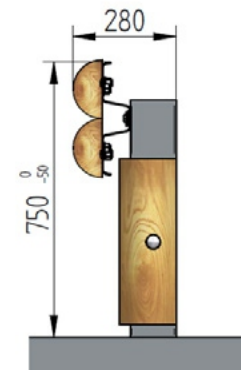
▶ Testing conditions

Containment level	Crash test criteria				Kinetic energy	Recommended level of use
	Test	Speed of impact	Angle of impact	Total weight of vehicle		
N2	TB 32	110 km/h	20°	1500 kg	81,9 kj	Normal containment
	TB 11	100 km/h	20°	900 kg	40,6 kj	

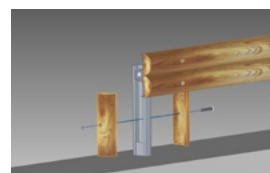
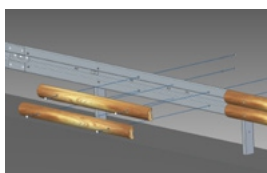
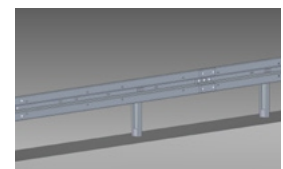
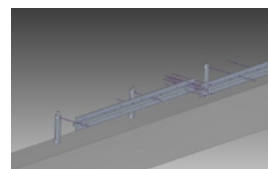
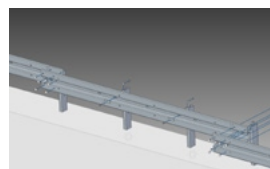
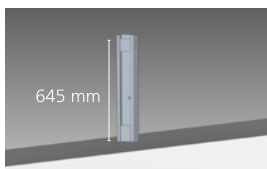
Model	Working Width (W)	Dynamic Deflexion (Dm)	Severity Class (ASI)	Minimal length recommended (m)
T32 1.33 m	W2 (0.70 m)	0.60 m	B (≤ 1.4)	72 m
T32 2.66 m	W3 (0.90 m)	0.80 m	B (≤ 1.4)	72 m

▶ Technical information

- B profile steel rail (296x4300x2.5 mm) clad with four half round logs of 16 cm
- C125 steel posts with post spacing 1.33 m (or 2.66 m)
- Pressure-treated wood with chromium and arsenic-free preservatives



▶ Assembly



▶ Certificate

- All our guardrails have been tested in accordance with the requirements of standards EN 1317 1-2-5
- T32 : CE n° 0497/CPR/5906
- Notified body : **CSI**



Johannesburg
131 Anvil Road, Isando

Tel: +27 11 974 8511
Fax: +27 11 974 8510

Cape Town
Tel: +27 21 531 9071

Durban
Tel: +27 31 705 6355

Port Elizabeth
Tel: +27 41 486 3674

E-mail: mail@armco.co.za

Web: www.armco.co.za