

MP200 | Ring Beams

Ring beams may be used around the ends of **MP200** structures. All structures larger than 4,0 m diameter or span must be provided with a **ring beam**.

The diagram below must be used to decide if a **ring beam** is required for structures less than 4,0 m in diameter.

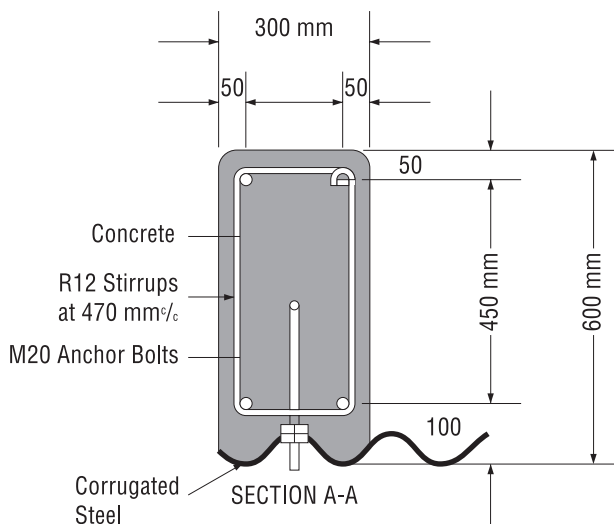


Fig. 3 - Typical ring beam detail

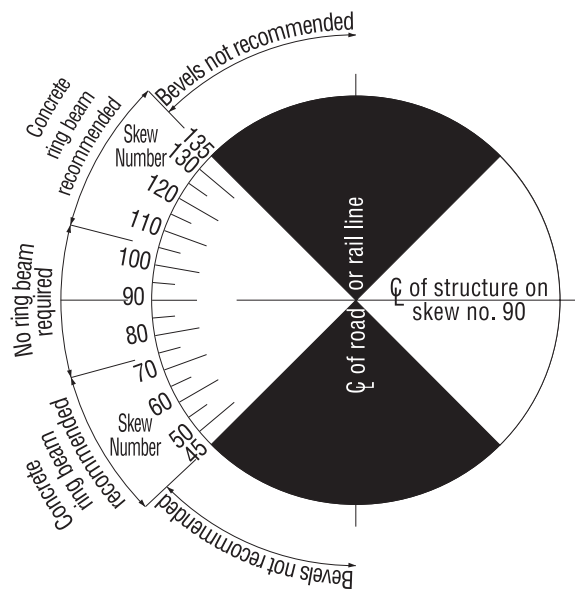


Fig. 4

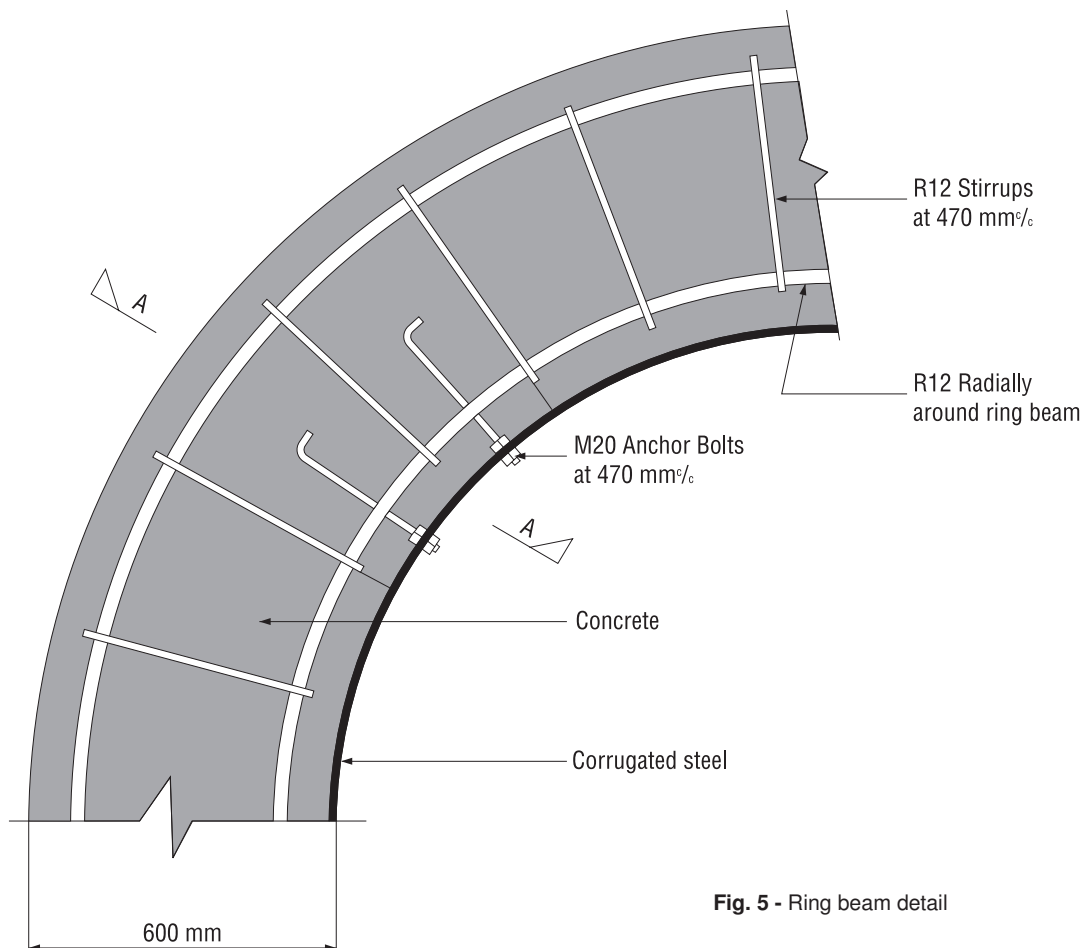


Fig. 5 - Ring beam detail