

MP68 | Notch Nestable Pipe

MP68 is used when the sophistication of a fully bolted pipe is not required and is used extensively in Botswana.

The **MP68** pipes are assembled by clipping two half sections together to form the required shape.

The sections are fixed using either stitches for sizes less than 825 mm or hook and eye bolts for sizes greater than 825 mm.

The joints are staggered as indicated in figure 3 by using split sections.

The plates are corrugated as indicated in figure 1 and have the properties as indicated in table 1.

The pipes are manufactured from either 1,6; 2,0; 2,8; 3,5 mm thick steel.

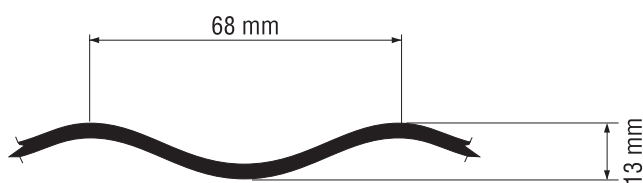


Fig. 1 - Typical corrugation (MP68)

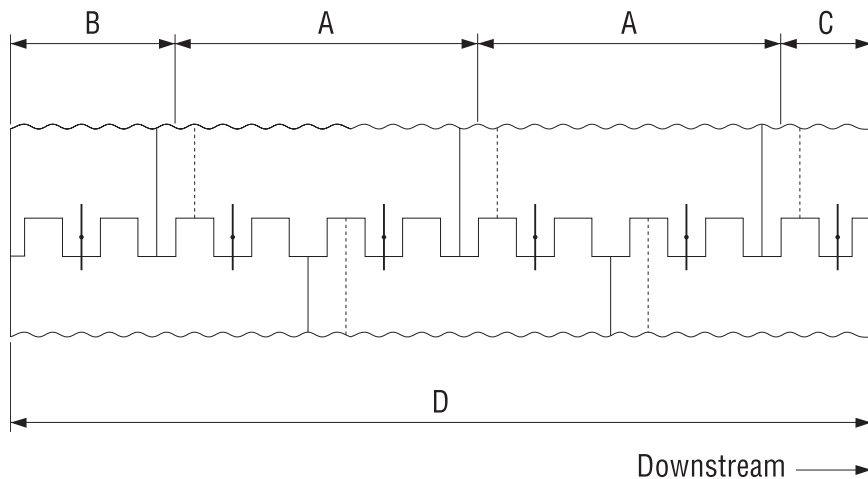


Fig. 3 - Typical assembly arrangements

- A = 9 Corrugation section
- B = 4 Corrugation section
- C = 5 Corrugation section
- D = Length in multiples of 610 mm